

# Harrison Elem. Weekly Blitz: May 15<sup>th</sup>, 2020



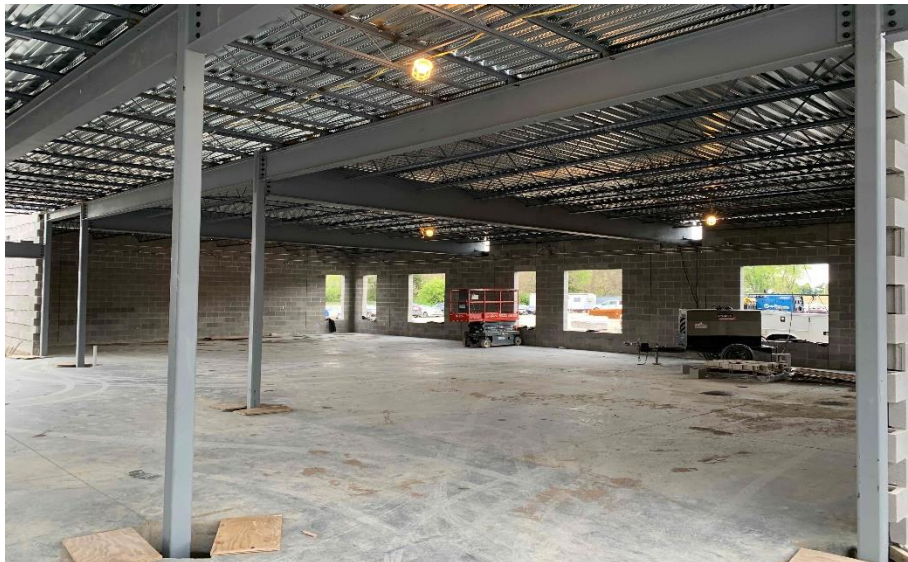
**Harrison Elementary:** The gym, mechanical, and kitchen bearing walls continue to rise in Area A. In Area B, the 2<sup>nd</sup> floor steel and metal decking will be complete and the concrete slab poured next week. In-wall and above ceiling rough-in for MEP piping and duct has begun in both Areas A and Area B.



# Crosby Elem. Weekly Blitz: May 15<sup>th</sup>, 2020



**Crosby Elementary:** The gym bearing walls are complete and the cafeteria walls continue to rise in Area A. In the South half of Area B, steel is being set for the 2<sup>nd</sup> floor followed by metal decking. Electrical and plumbing rough-ins are being installed in bearing block.



# Miami Whitewater Weekly Blitz: May 15<sup>th</sup>, 2020



**Miami Whitewater Campus:** 1<sup>st</sup> floor bearing walls in the South half of Area B are complete with the North half to follow in preparation for 2<sup>nd</sup> floor steel. Steel columns and beams in the South half of Area B are being set. Electrical and plumbing rough-ins are being installed in bearing block.



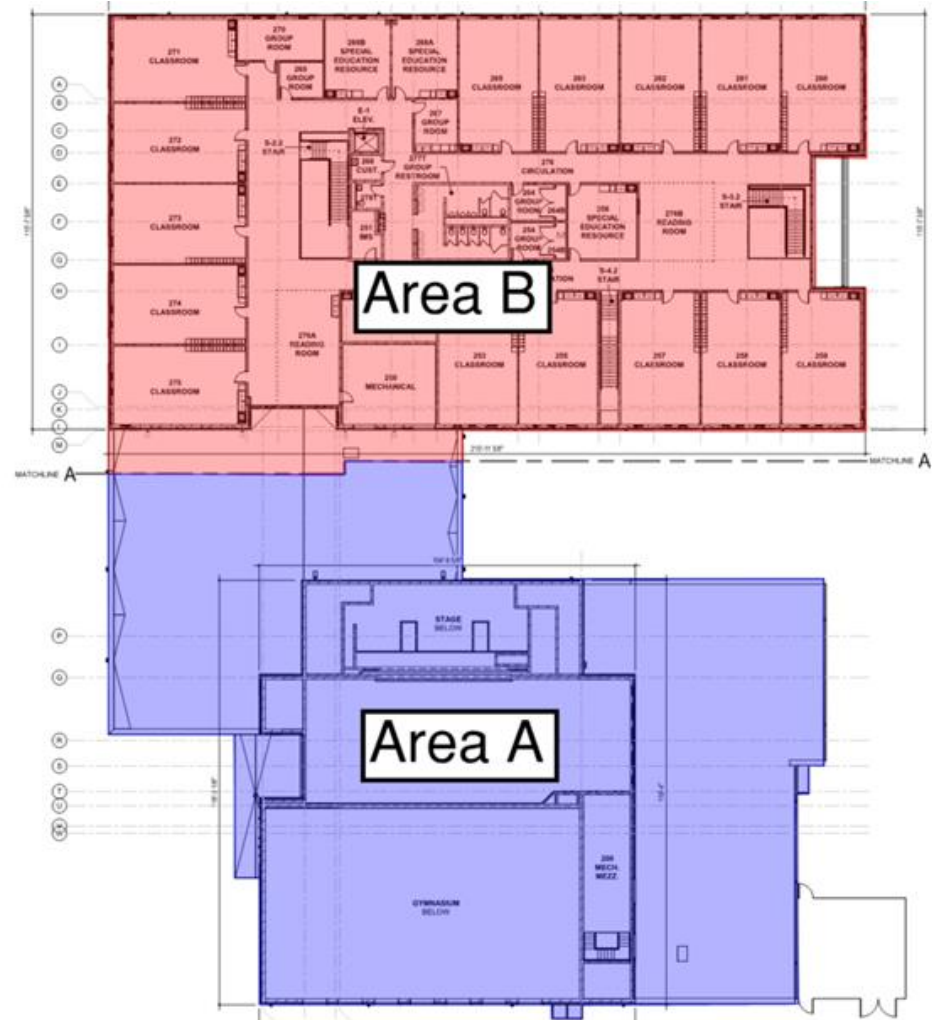
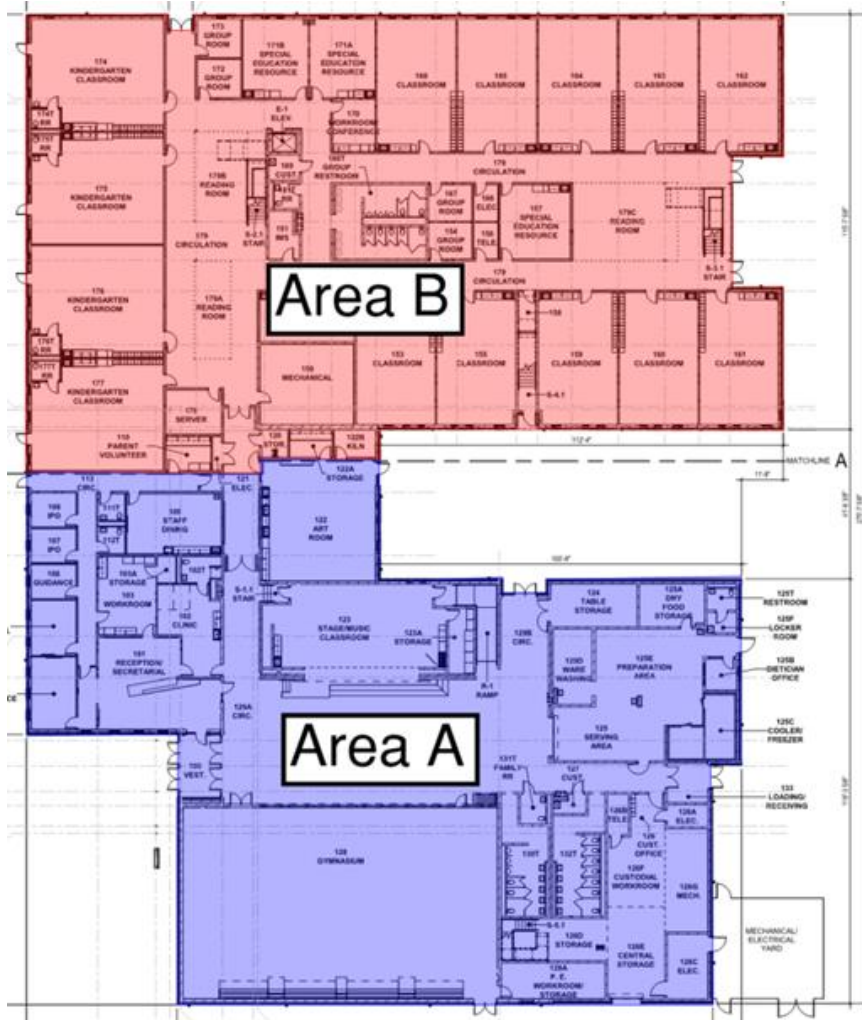
# Junior High Weekly Blitz: May 15<sup>th</sup>, 2020



**Harrison Junior High:** Foundation block continues in Area C while bearing walls are starting to rise in the East half of Area A. The Area B slab on grade is being prepped for next week's concrete pour. MEP underground is being installed in Area C and the parking lot light pole bases are being poured across the site.



# Elementary School Floor Plans



# Junior High School Floor Plans

