

# Harrison Elem. Weekly Blitz: June 12<sup>th</sup>, 2020



**Harrison Elementary:** In Area A, the elevated concrete slab at the 2<sup>nd</sup> floor mezzanine has been poured and the roof steel is being set. In Area B, the 2nd floor bearing walls are rising to the roof level and framing for the 1st floor interior walls continues. In-wall and above ceiling MEP rough-in continues in both Areas.



# Crosby Elem. Weekly Blitz: June 12<sup>th</sup>, 2020



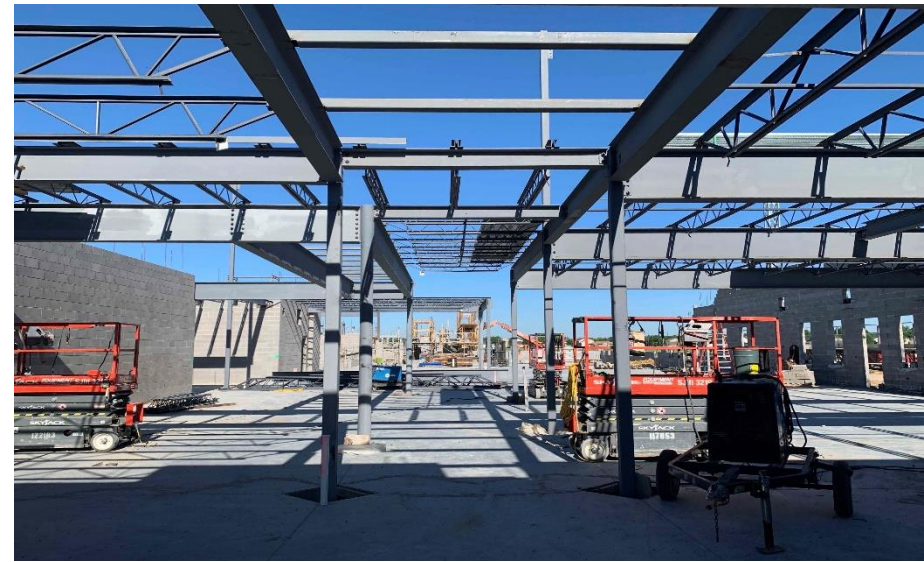
**Crosby Elementary:** In Area A, the stage bearing walls continue to rise and steel at the gym and mezzanine is being set. In Area B, the entire 2<sup>nd</sup> floor elevated concrete slab was poured and the 1<sup>st</sup> floor interior walls are being laid out. In-wall and above ceiling MEP rough-in continues in both Areas.



# Miami Whitewater Weekly Blitz: June 12<sup>th</sup>, 2020



**Miami Whitewater Elementary:** The gym bearing walls are starting to rise after two steel beams were set in place at the gym entrance in Area A. In Area B, the North half of the 2nd floor steel is being set and the South half is prepped for this week's elevated concrete slab pour. In-wall and above ceiling MEP rough-in continues in both Areas.



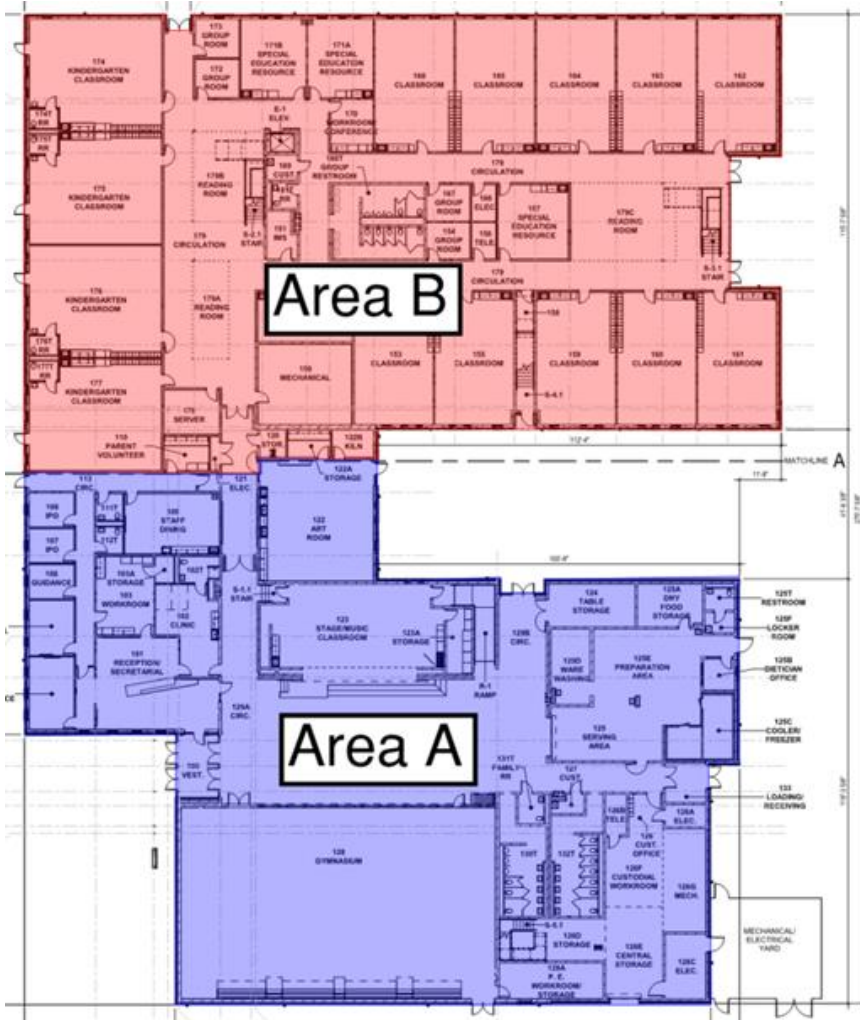
# Junior High Weekly Blitz: June 12<sup>th</sup>, 2020



**Harrison Junior High:** In Area A, the 1<sup>st</sup> floor bearing walls and structural steel sequence #1 (East) have been completed in the academic wing. In-wall and above ceiling MEP rough-in continues. In Area C, the foundation block is complete and the gym, kitchen, and locker rooms are being prepped for next week's concrete pour.



# Elementary School Floor Plans



# Junior High School Floor Plans

