

# Harrison Elem. Weekly Blitz: June 26<sup>th</sup>, 2020



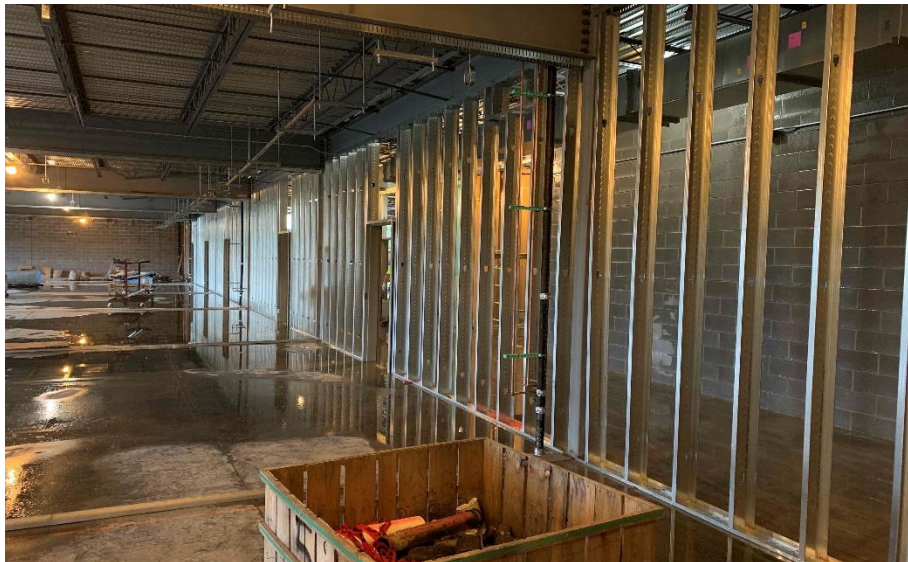
**Harrison Elementary:** The Area A kitchen and mechanical block walls are being laid. In Area B, the 2nd floor roof decking is being installed and metal stairs are being set. The interior wall framing is complete at the 1<sup>st</sup> floor and the 2<sup>nd</sup> floor framing has begun. In-wall and above ceiling MEP rough-in continues in both Areas.



# Crosby Elem. Weekly Blitz: June 26<sup>th</sup>, 2020



**Crosby Elementary:** In Area A, the stage bearing walls continue to rise and the mechanical concrete pad at the mezzanine has been poured. In Area B, the 2<sup>nd</sup> floor block walls are rising to the roof level and the elevator shaft has been built. The 1<sup>st</sup> floor interior walls and door frames are being framed and set. In-wall and above ceiling MEP rough-in continues in both Areas.



# Miami Whitewater Weekly Blitz: June 26<sup>th</sup>, 2020



**Miami Whitewater Elementary:** The gym bearing walls continue to rise in Area A. In Area B, the 1<sup>st</sup> floor interior walls are being framed in and door frames are being set. Metal decking in the North half of the 2<sup>nd</sup> floor is being installed and prepped for the upcoming elevated concrete pour. In-wall and above ceiling MEP rough-in continues in both Areas.



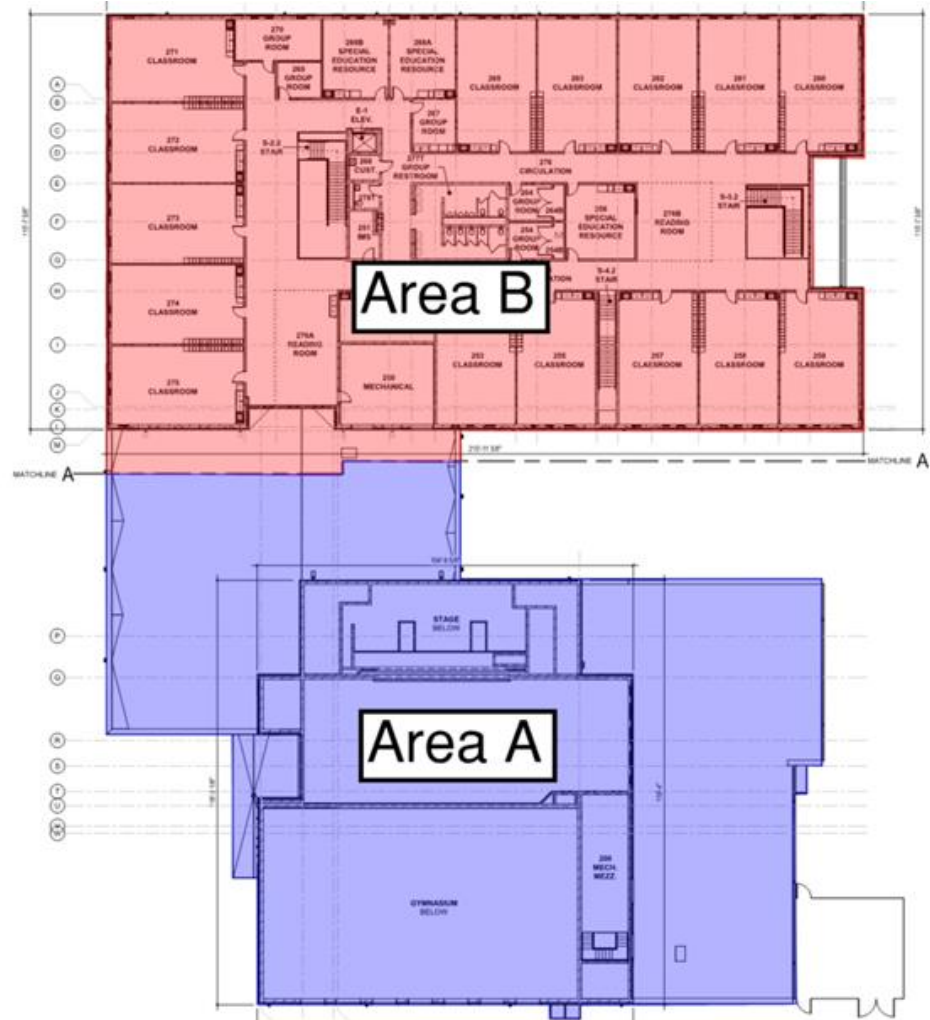
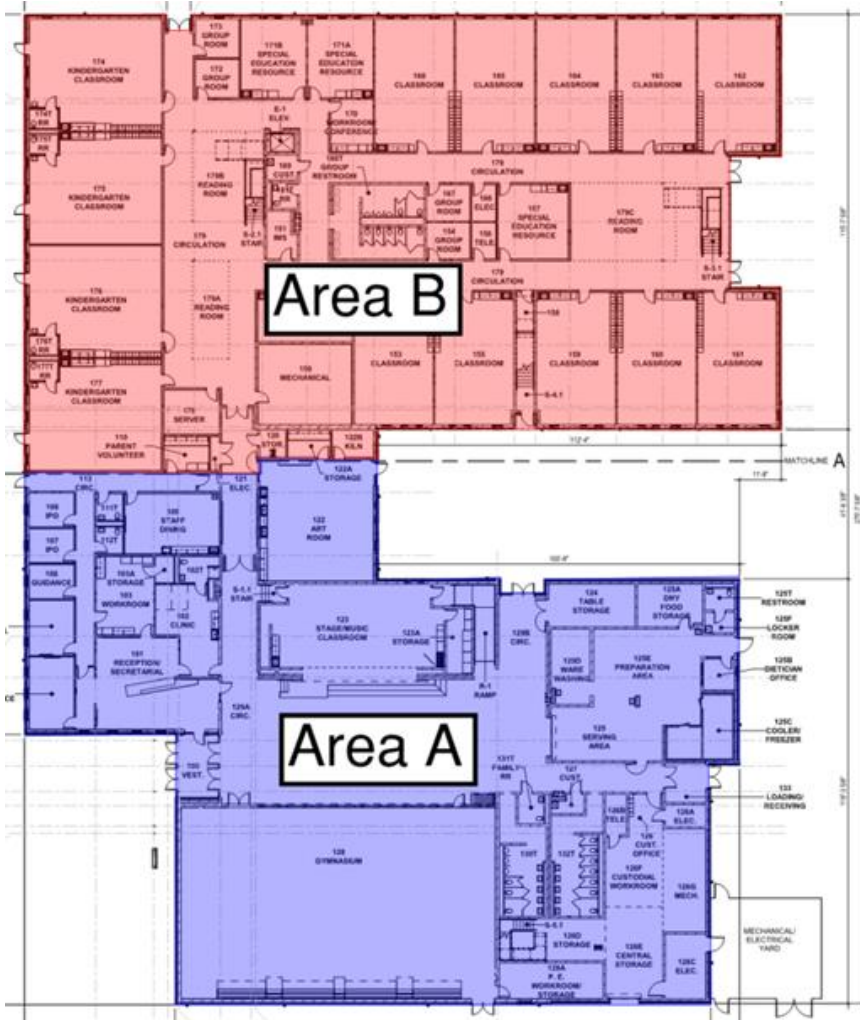
# Junior High Weekly Blitz: June 26<sup>th</sup>, 2020



**Harrison Junior High:** 2<sup>nd</sup> floor metal decking is being installed in the West half of the academic wing and bearing block walls continue to rise in Area B. In Area C, the admin concrete floor has been poured and bearing block is being laid out in the kitchen and gym. In-wall and above ceiling MEP rough-in continues.



# Elementary School Floor Plans



# Junior High School Floor Plans

