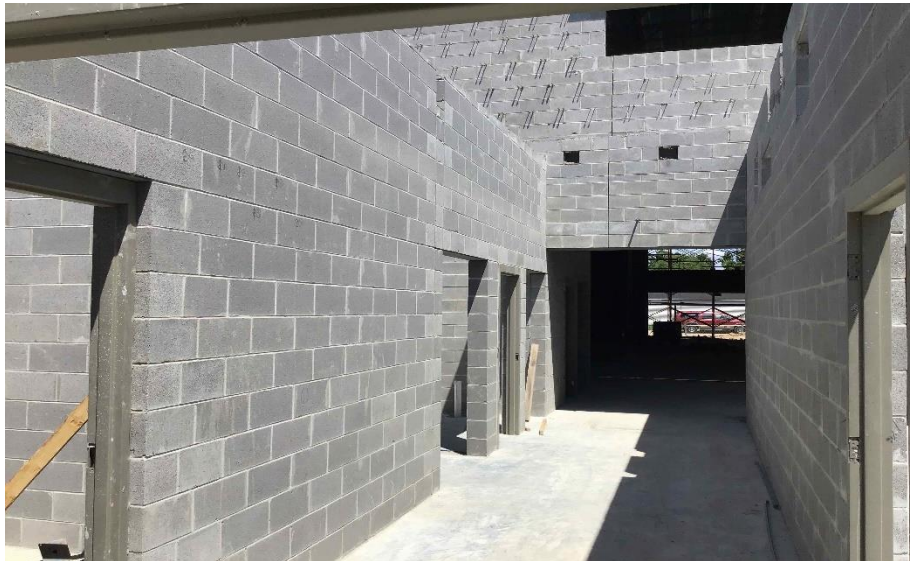


Harrison Elem. Weekly Blitz: July 17th, 2020



Harrison Elementary: The bearing block walls in the Area A administration wing continue to rise. In Area B, the roof will be completed and the window openings will be covered this week. Metal stair installation continues in the stairwells. The 2nd floor interior walls and door frames are being framed and set. In-wall and above ceiling MEP rough-in continues in both Areas.



Crosby Elem. Weekly Blitz: July 17th, 2020



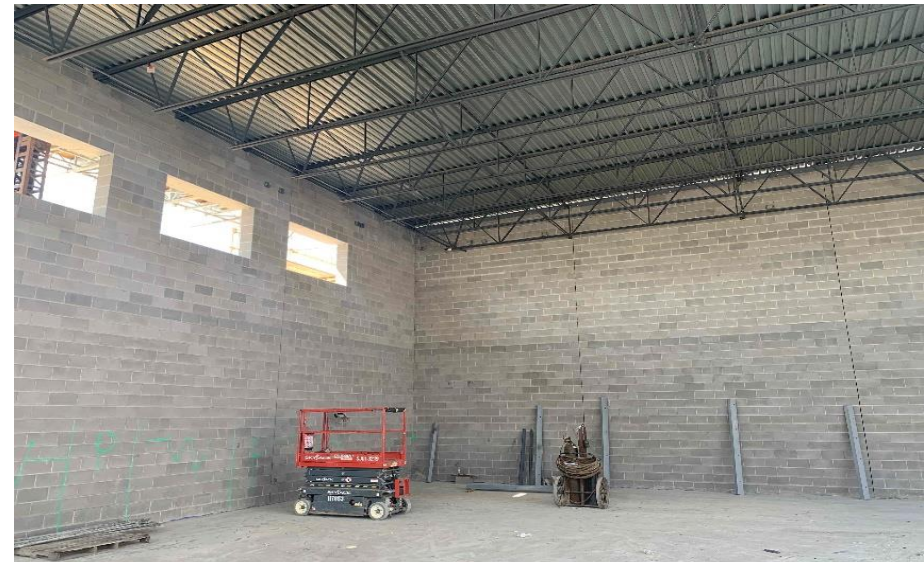
Crosby Elementary: In Area A, the roofing material has been delivered and the metal roof decking is being installed in the gym, cafeteria, and stage. The main entrance bearing block walls are being laid. In Area B, the 2nd floor block walls are complete up to the roof level. HVAC duct and sprinkler lines have been installed in Area B level 1. In-wall and above ceiling MEP rough-in continues in both Areas.



Miami Whitewater Weekly Blitz: July 17th, 2020



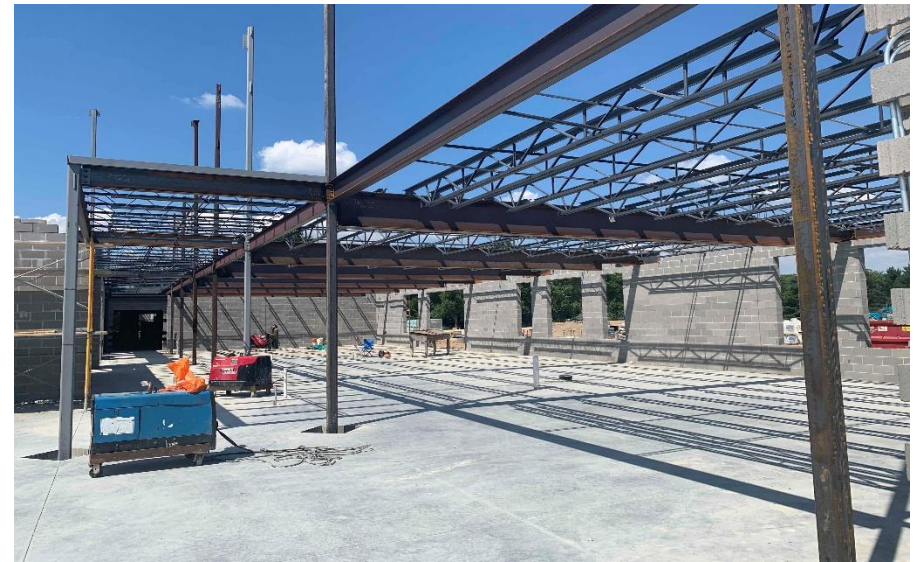
Miami Whitewater Elementary: The stage bearing block walls continue to rise and the roof steel has been set at the gym in Area A. The air handling units were delivered this week and installation has begun. In-wall and above ceiling MEP rough-in continues throughout Area B.



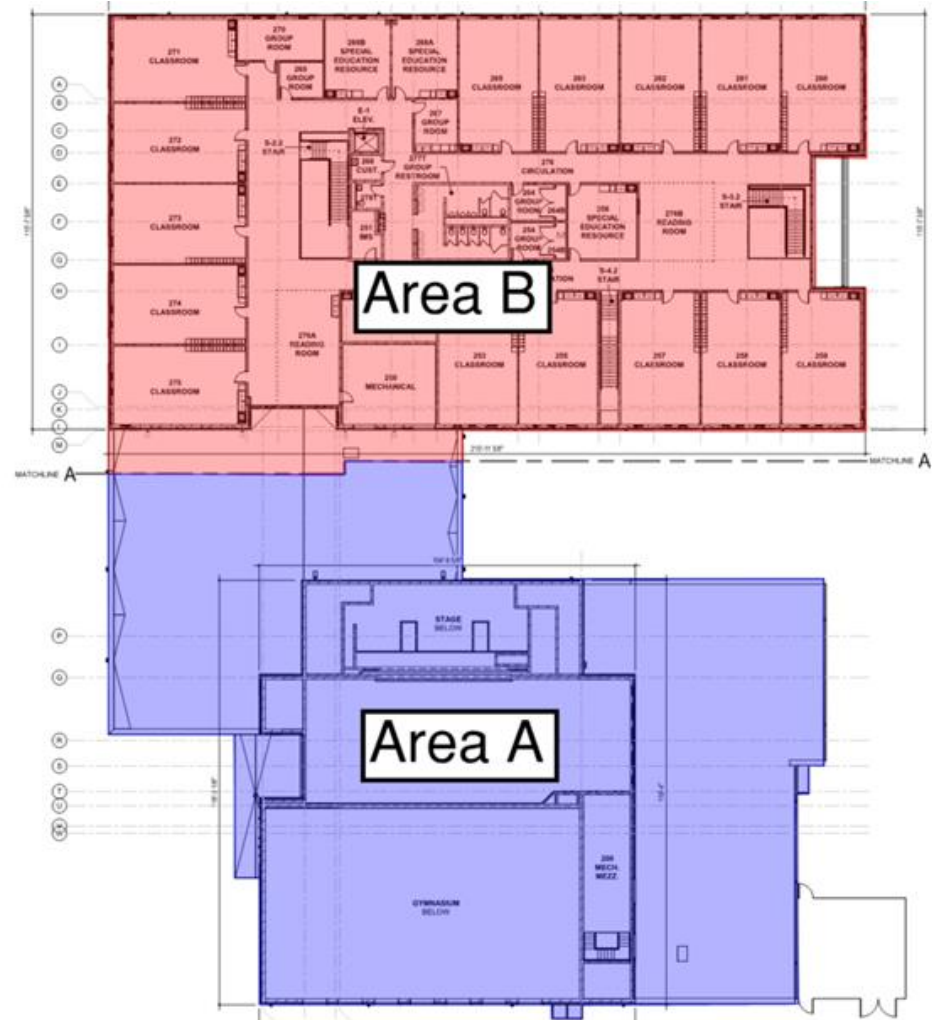
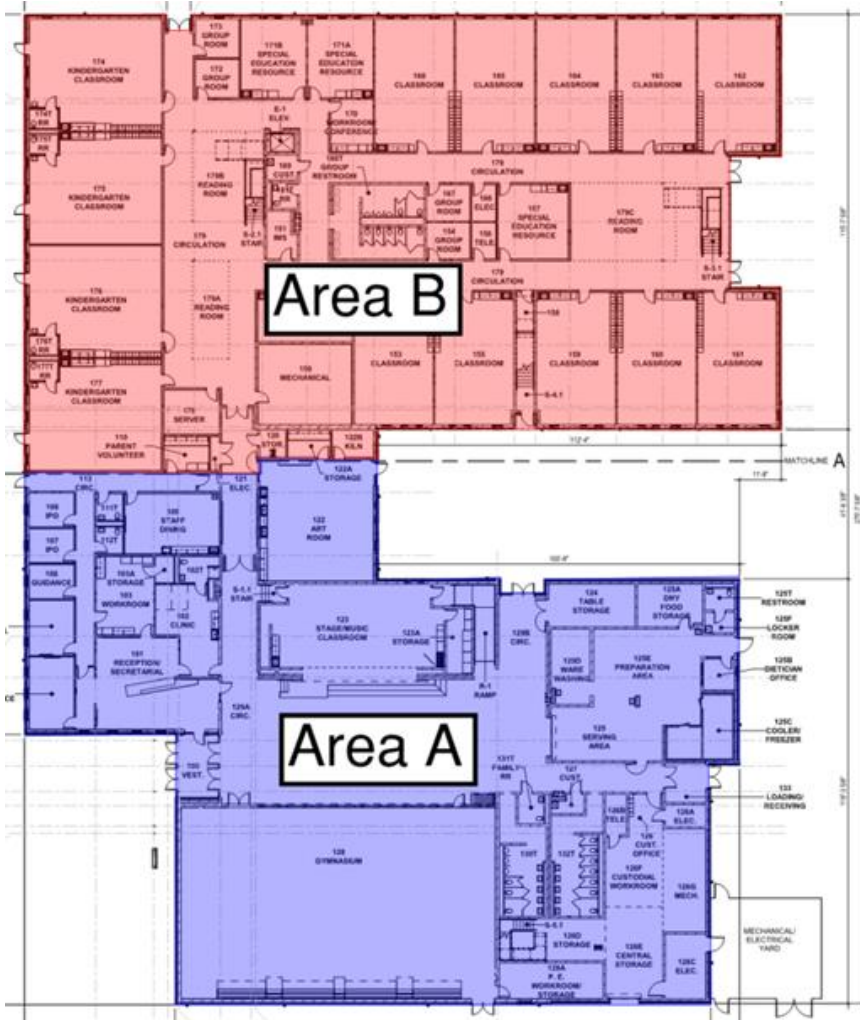
Junior High Weekly Blitz: July 17th, 2020



Harrison Junior High: The 2nd floor elevated concrete slab of the academic wing has been poured while the interior walls are being laid out on the 1st floor. Bearing block walls continue to rise in the kitchen and gym in Areas B & C. Structural steel is being set in the East half of Area B. In-wall and above ceiling MEP rough-in continues.



Elementary School Floor Plans



Junior High School Floor Plans

