

# Harrison Elem. Weekly Blitz: August 21<sup>st</sup>, 2020



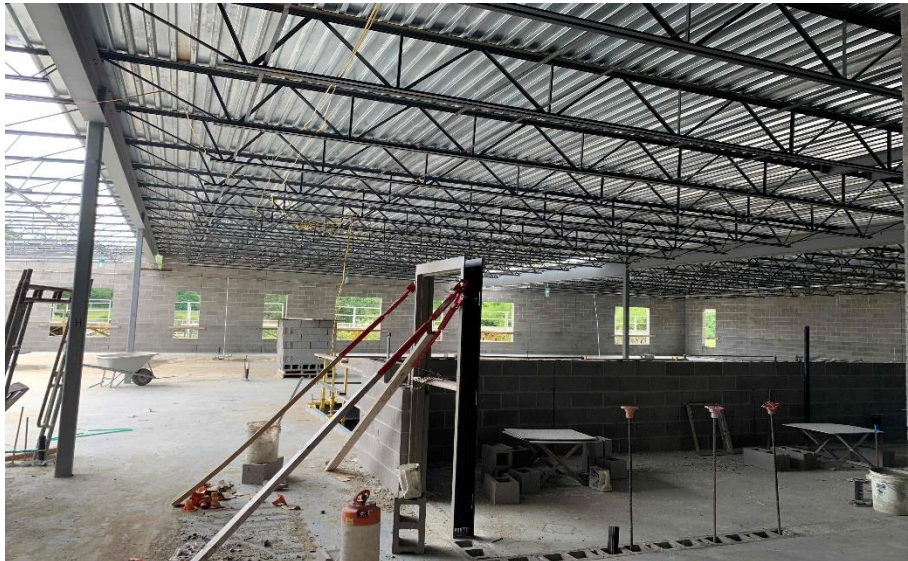
**Harrison Elementary:** In Area A, brick is being laid in the courtyard while the bearing block walls are complete in the art room and administration area. The Area A mechanical room metal stairs are being set in the stairwell. In the academic wing, the 1<sup>st</sup> floor walls are being painted while drywall is being hung and finished on the 2<sup>nd</sup> floor. Above ceiling MEP rough-in continues in both Areas.



# Crosby Elem. Weekly Blitz: August 21<sup>st</sup>, 2020



**Crosby Elementary:** In Area A, the kitchen and mechanical room bearing block walls are complete as the art room walls start to rise. The Area B roof steel and decking has been set and installed above the academic wing. The 2<sup>nd</sup> floor interior walls are being laid out and the framing will begin next week. In-wall and above ceiling MEP rough-in continues in both Areas.



# Miami Whitewater Weekly Blitz: August 21<sup>st</sup>, 2020



**Miami Whitewater Elementary:** Bearing block walls are being laid in the kitchen, mechanical room, and administration area in Area A. In Area B, roof steel is being set in the North half of the 2<sup>nd</sup> floor and the layout for the interior walls will begin next week. In-wall and above ceiling MEP rough-in continues throughout Area B.



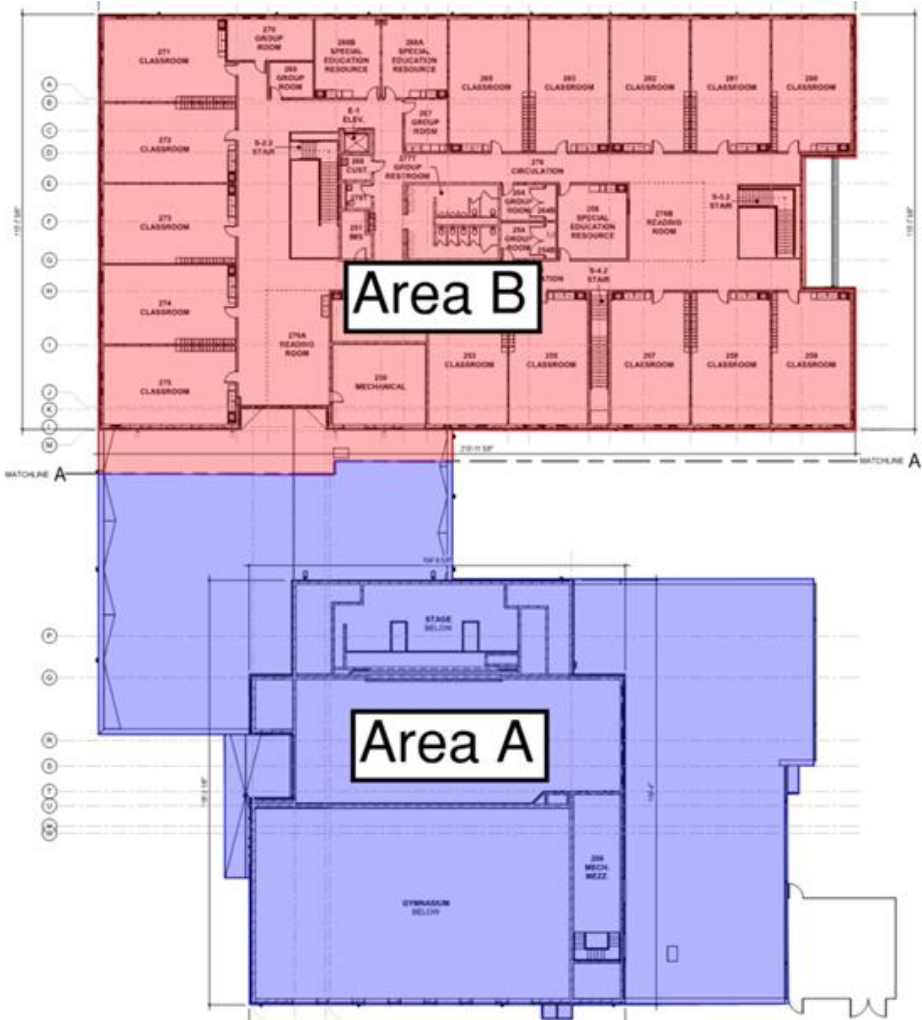
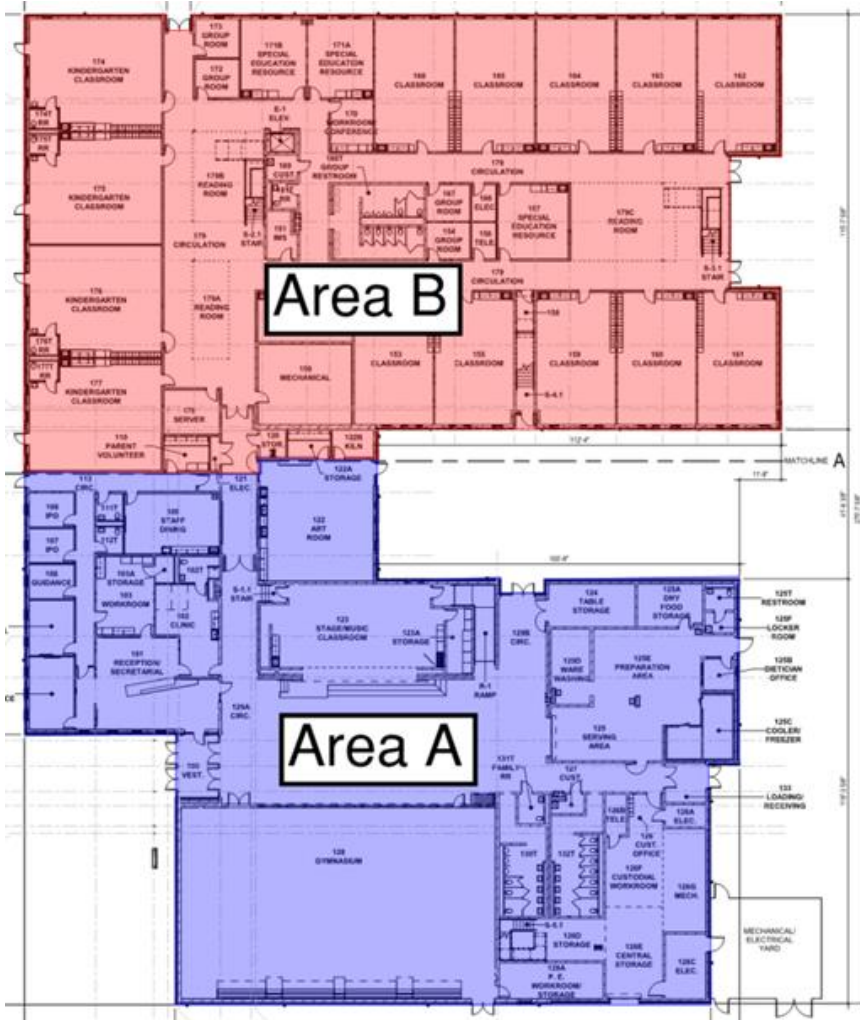
# Junior High Weekly Blitz: August 21<sup>st</sup>, 2020



**Harrison Junior High:** In the academic wing, structural steel in the West half of the 2<sup>nd</sup> floor has been set and completed as the East half begins. The Area B interior walls are being laid out and framed on the 1<sup>st</sup> floor. In Area C, bearing block walls continue to rise in the kitchen. In-wall and above ceiling MEP rough-in continues.



# Elementary School Floor Plans



# Junior High School Floor Plans

